

# THE SPACE AND DATA

## SECTOR IN CORNWALL & THE ISLES OF SCILLY



The space and data industry is concerned with the manufacture and use of spacecraft, satellites and other components that go into Earth's orbit or beyond. It is also concerned with the analysis and use of data gathered from space, including data about the earth viewed from space. This is why we refer to it as the 'space and data' sector.

### BY 2030

Cornwall & the Isles of Scilly plan to be a regional leader in the national space programme. The Local Enterprise Partnership anticipate that the space and data sector will have contributed to an additional



There are around



space related further education courses available at Cornwall College and Truro and Penwith College.

A further **134** space related higher education courses are available in and around Cornwall in areas such as geography and geospace, computer science, engineering, business and science.

**86%**

of space industry employers recruit staff with transferable skills from other sectors.<sup>1</sup>

### The Cornwall Space Cluster

brings together **157** industry partners, **10** academic and educational institutions and **9** government departments.



<sup>1</sup>. [https://assets.publishing.service.gov.uk/government/uploads/system/uploads/attachment\\_data/file/964639/BMG\\_2081\\_UKSA\\_Space\\_Sector\\_Skills\\_Survey\\_2020\\_Report\\_V1.pdf](https://assets.publishing.service.gov.uk/government/uploads/system/uploads/attachment_data/file/964639/BMG_2081_UKSA_Space_Sector_Skills_Survey_2020_Report_V1.pdf)

Scan the QR code or visit [www.careershucios.co.uk/lmi-guides](http://www.careershucios.co.uk/lmi-guides) to find out more

# CIOS LEP



# THE CLEAN ENERGY (RENEWABLES)

## SECTOR IN CORNWALL & THE ISLES OF SCILLY



Clean energy is energy that comes from renewable, zero emission sources that do not pollute the atmosphere when used, as well as energy saved by energy efficiency measures.

Cornwall uses an estimated

# £500m

of energy each year. Much of this energy is imported from outside Cornwall and is largely dependent upon fossil fuel consumption.



Research commissioned by the LEP on Cornwall's Green Economy highlights local demand for the following roles in the sector...

**ELECTRICIAN** • ENERGY ASSESSOR • **ENGINEERS (ALL TYPES)** • RESEARCHER • **SOLAR INSTALLER** • WIND TURBINE TECHNICIAN



Floating offshore wind is anticipated to bring many opportunities locally over the next decade. The first **FLOW** project is expected to be in the water off the coast of Cornwall around **2026** with the first wave of projects completing by **2030**.

# CORNWALL HAS THE POTENTIAL

to provide and develop a broad range of renewable and low carbon infrastructure, including wind, geothermal, photo-voltaic, biomass and wave power.



Scan the QR code or visit [www.careershubcios.co.uk/lmi-guides](http://www.careershubcios.co.uk/lmi-guides) to find out more

# CIOS LEP



# THE CONSTRUCTION

SECTOR IN CORNWALL & THE ISLES OF SCILLY



From building new SMART energy efficient and sustainable homes, education buildings, healthcare facilities and workplaces, to developing our transport, agritech, tourism and leisure facilities of the future - none of it will happen without construction.

**32,970**  
construction  
workers in  
Cornwall

## SALARIES IN THE UK CONSTRUCTION SECTOR



### OCCUPATION TITLE

### MEDIAN SALARY (UK WIDE)

Bricklayers and masons	£27,991
Carpenters and joiners	£27,886
Elementary construction occupations	£23,922
Glaziers, window fabricators and fitters	£22,421
Other administrative occupations	£18,207
Plumbers, heating and ventilating engineers	£31,618
Production managers and directors	£42,710
Quantity surveyors	£43,213
Sales related occupations	£21,268
Sales supervisors	£20,993

**£32,978**  
Average advertised  
salary in Cornwall's  
construction  
sector.



Plumbers, heating and ventilating engineers, carpenters and joiners are in high demand in Cornwall & the Isles of Scilly.

**18%**  
are employed  
part time

**72%**  
are  
employed  
full time



in Cornwall



Scan the QR code or visit [www.careershucios.co.uk/lmi-guides](http://www.careershucios.co.uk/lmi-guides) to find out more

CIOS LEP



# THE CREATIVE

## SECTOR IN CORNWALL & THE ISLES OF SCILLY



The creative sector includes artists, musicians, writers and performers, as well as makers (of all kinds, photographers, TV, radio and film makers, games and virtual reality programmers and graphic designers).

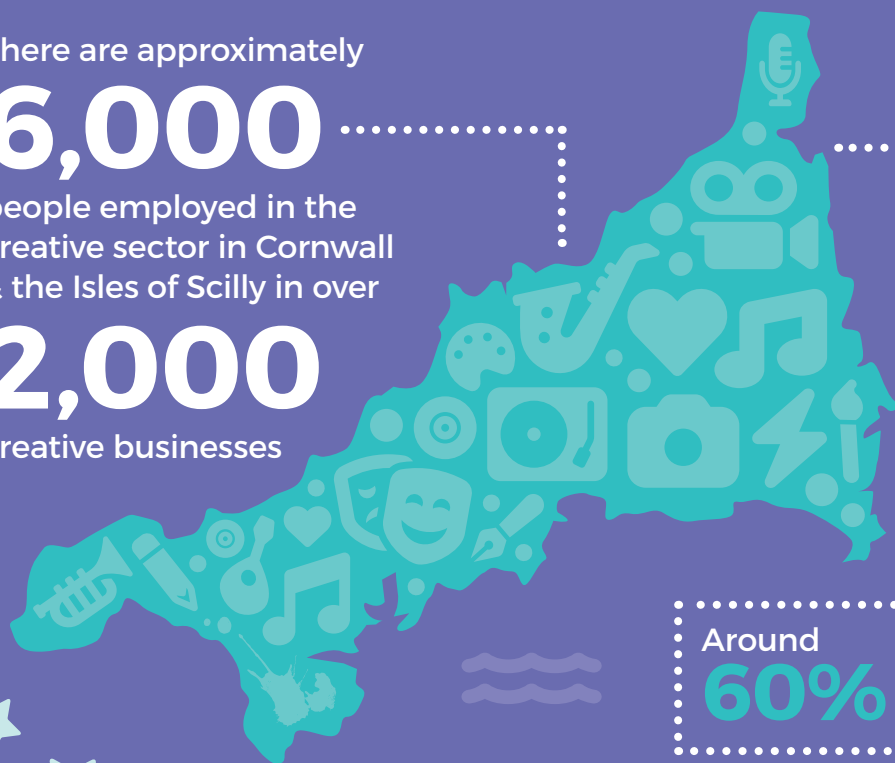
There are approximately

**6,000**

people employed in the creative sector in Cornwall & the Isles of Scilly in over

**2,000**

creative businesses



**£24,747**

Average advertised salary in the creative sector in Cornwall.

Around

**60%**

of creative sector workers are freelance.



**Cornwall is home to Falmouth University, a top creative industries university,** which offers a diverse range of creative courses.



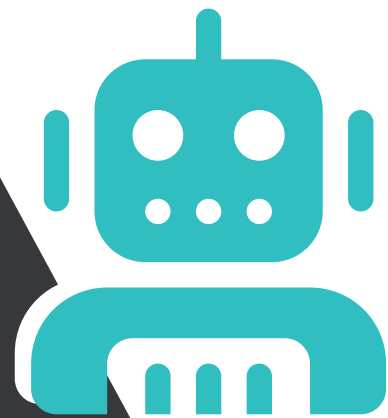
Scan the QR code or visit [www.careershubcios.co.uk/lmi-guides](http://www.careershubcios.co.uk/lmi-guides) to find out more

**CIOS LEP**



# THE DIGITAL

SECTOR IN CORNWALL & THE ISLES OF SCILLY



The digital and tech sector includes a wide range of businesses and jobs ranging from computer programming and consultancy, telecommunications through to the development of computer games and the technical aspects of media production.

## THERE ARE 1460 DIGITAL ORGANISATIONS

in Cornwall & the Isles of Scilly.



Cornwall is home to the fastest growing tech sector in the south-west, with **forecasted annual growth of**

**17.9%**  
by 2026.

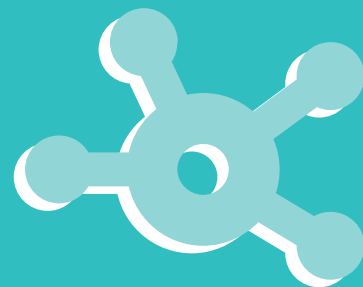
Employers prioritise



**COMMUNICATION,  
CREATIVITY  
AND PROBLEM-  
SOLVING SKILLS.**



These skills can all be developed throughout education or by working in non-digital roles.



Scan the QR code or visit [www.careershucios.co.uk/lmi-guides](http://www.careershucios.co.uk/lmi-guides) to find out more

CIOS LEP



CORNWALL  
COUNCIL  
one and all • onen hag oll

# THE ENGINEERING & MANUFACTURING

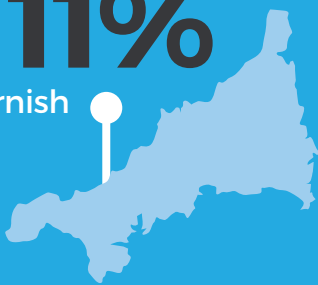
SECTOR IN CORNWALL & THE ISLES OF SCILLY



The engineering and manufacturing sectors make up

**11%**

of the Cornish economy



with salaries for different occupations within the sector showing significant variation.



In Cornwall and the Isles of Scilly

**MINING IS A SUB SECTOR THAT COULD GROW CONSIDERABLY IN THE NEXT FEW YEARS,**

driven by a demand for new minerals.

**WITHIN CORNWALL DEMAND IS HIGHEST**

FOR SCIENCE, ENGINEERING AND PRODUCTION TECHNICIANS AND PRODUCTION MANAGERS.

THE FOUR MAIN CATEGORIES OF ENGINEERING ARE:



CHEMICAL



CIVIL



ELECTRICAL



MECHANICAL



Aerospace and software engineering are also part of the wider sector.



Scan the QR code or visit [www.careershubcios.co.uk/lmi-guides](http://www.careershubcios.co.uk/lmi-guides) to find out more

CIOS LEP



CORNWALL COUNCIL  
one and all • onen hag oll

# THE HEALTH & SOCIAL CARE

SECTOR IN CORNWALL & THE ISLES OF SCILLY



The health and social care sector makes up

**14%**

of the Cornish economy



Within Cornwall, demand is highest for **nurses**



THERE IS NO REQUIREMENT FOR EXPERIENCE TO JOIN THE SOCIAL CARE SECTOR.

**WHAT MATTERS MOST IS THE RIGHT VALUES AND ATTITUDES** - THERE'S FULL TRAINING AND SUPPORT FOR EVERYTHING ELSE.

The mean average salary is **£22,194**

with salaries for different occupations within the sector showing significant variation.



Many care workers and home carers work part time or flexible hours to suit their lifestyles.



Most care employers now pay at least the **real living wage** and some **up to £14/hr.**



Scan the QR code or visit [www.careershucios.co.uk/lmi-guides](http://www.careershucios.co.uk/lmi-guides) to find out more

CIOS LEP



# THE LAND-BASED

SECTOR IN CORNWALL & THE ISLES OF SCILLY



In Cornwall & the Isles of Scilly there is a heritage of farming and fishing. More land is dedicated to farming and food than the national average and more people are employed in this sector than the national average.

According to the UKRI (UK Research & Innovation) it is predicted that

**60%** ... more food will be needed worldwide by **2050** to feed the increasing global population.



WITHIN CORNWALL, THE DEMAND IS HIGHEST FOR



VETERINARIANS



SCIENTISTS



ENGINEERS



PRODUCTION TECHNICIANS

## AGRI-TECH

is the use of **technology** and **innovation** for farming and agricultural processes that is developed to improve **efficiency, output** and **profitability**.



The supply side of the industry also requires

- **AGRONOMISTS** • NUTRITIONISTS
- **CONSULTANTS** • LAND AGENTS
- **AGRICULTURAL ENGINEERS** • HERD MANAGERS



Scan the QR code or visit [www.careershubcios.co.uk/lmi-guides](http://www.careershubcios.co.uk/lmi-guides) to find out more

CIOS LEP





# THE MARINE

SECTOR IN CORNWALL & THE ISLES OF SCILLY



The marine sector is made up of ports, shipping, marine engineering and manufacturing, marine business services, leisure marine, technology and research businesses as well as fishing.



## APPRENTICESHIPS ARE AVAILABLE

in specialist skilled areas such as **boat building, marine engineering** and general, transferable areas such as **project management**.



The sector will continue to take advantage of technological developments that increase the efficiency and sustainability of equipment, harness the power of the ocean and collect and analyse data.

High demand jobs in Cornwall's marine sector in the last year include

### **BUSINESS, FINANCE & PROJECT MANAGEMENT**

- CARPENTERS & JOINERS
- VAN DRIVERS
- ENGINEERING PROFESSIONALS N.E.C.

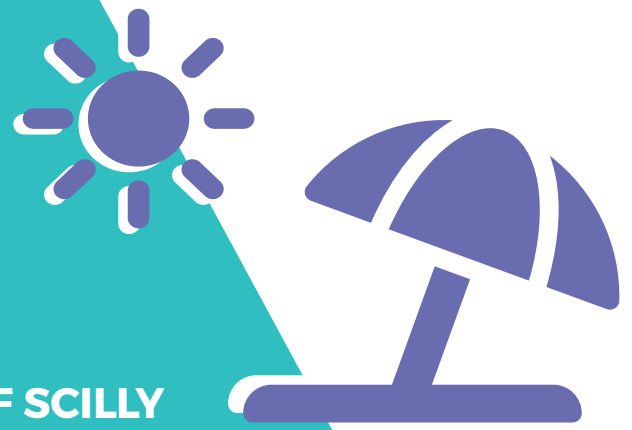


Scan the QR code or visit [www.careershubcios.co.uk/lmi-guides](http://www.careershubcios.co.uk/lmi-guides) to find out more

CIOS LEP



# THE VISITOR ECONOMY

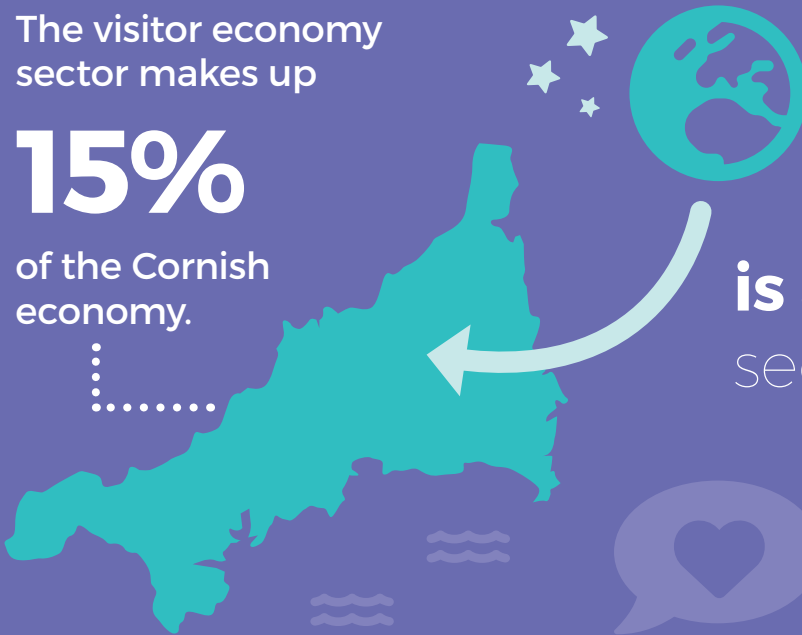


SECTOR IN CORNWALL & THE ISLES OF SCILLY

The visitor economy sector makes up

**15%**

of the Cornish economy.



Attracting **more visitors from overseas** is a focus for the sector

**...SO ANY LANGUAGE SKILLS COULD HELP YOU STAND OUT.**

Cornwall's visitor economy sector generates

**£2bn**

a year in the local economy

A lot of training is done **on the job**, either formally through an **apprenticeship** or **directly** from a line manager, and **work experience** is relatively easy to find in this sector.



The most in-demand skills in Cornwall's Visitor Economy are

**COOKING** • **CLEANING** • **CUSTOMER SERVICE** • **TEAMWORK** •



Scan the QR code or visit [www.careershubcios.co.uk/lmi-guides](http://www.careershubcios.co.uk/lmi-guides) to find out more

**CIOS LEP**



# OUR ECONOMY

IN CORNWALL & THE ISLES OF SCILLY



Cornwall's visitor economy sector generates



In Cornwall and the Isles of Scilly **MINING IS A SUB SECTOR THAT COULD GROW CONSIDERABLY IN THE NEXT FEW YEARS**, driven by a demand for new minerals.

**£2bn**

Within Cornwall, demand is high for **nurses, care workers, plumbers, carpenters, vets and scientists**



a year in the local economy



Cornwall is home to the fastest growing tech sector in the south-west, with forecasted annual growth of **17.9%** by 2026.



Floating offshore wind is anticipated to bring many opportunities locally over the next decade. **The first FLOW project is expected to be in the water off the coast of Cornwall around 2026 with the first wave of projects completing by 2030.**



**The Cornwall Space Cluster**

brings together **157** industry partners, **10** academic and educational institutions and **9** government departments.

**Cornwall is home to Falmouth University, a top creative industries university**, which offers a diverse range of creative courses.



Scan the QR code or visit [www.careershubcios.co.uk/lmi-guides](http://www.careershubcios.co.uk/lmi-guides) to find out more

CIOS LEP

